

ibea develops and integrates inspection systems to ensure your quality—modular in design, flexible and future-proof. Our goal is to secure your production processes without interruption and around the clock. Our systems comply with the highest industry standards and we guarantee system stability and performance, absolutely maintenance-free. We know that meeting only the highest quality standards will secure your uninterrupted production!



ibea developers place user-satisfaction above all else. One way to promote this philosophy is our user-friendly software. After only a short training people and machine are ready for use. Our systems are self-learning and therefore easy for our users to adapt to their specific product needs. In addition, modifications and add-ons can be implemented flexibly and in a short amount of time. We gained our long-standing expert

knowledge from many different customer specifications and a multitude of installed systems—including complete large-scale system integrations.

We would love to consult with you about your production planning and control, improvements on your materials handling equipment, as well as optimizing your workflows.

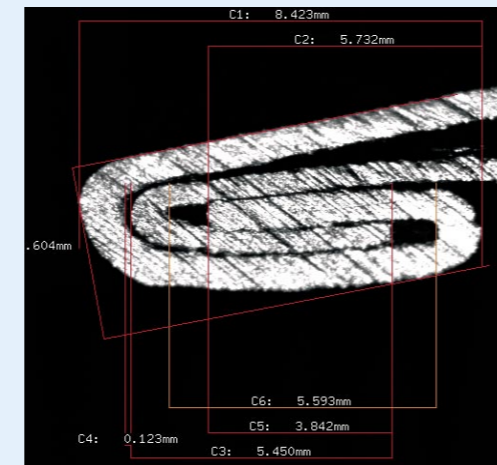
ibea optimizes workflows and secures your supply chain



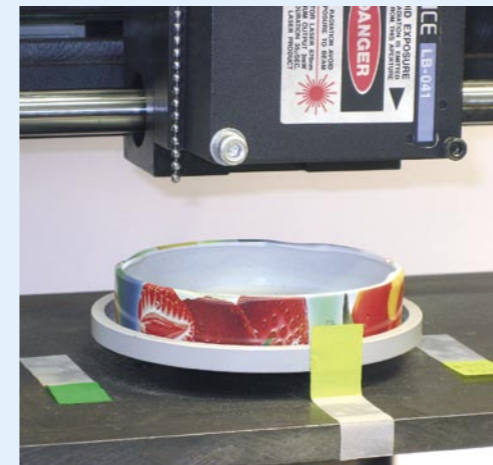
VPMS-1 for bulk containers



Flip-tester for inspection of closures and TO-caps



ibea seam scanner analysis and outcome of can seam inspection



Compound measuring tool



Test our know-how and send us your specifications!

Test our know-how and send us your specifications! Feel free to send us samples of your faulty products. Please give us a short description of your conveying system and include photographs, if possible. Please also include conveyor speed and part rate.

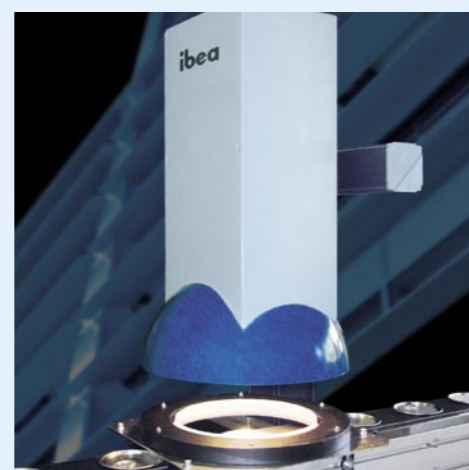
We will prepare a comprehensive offer specified to your needs, including needed accessories—all for an attractive price.



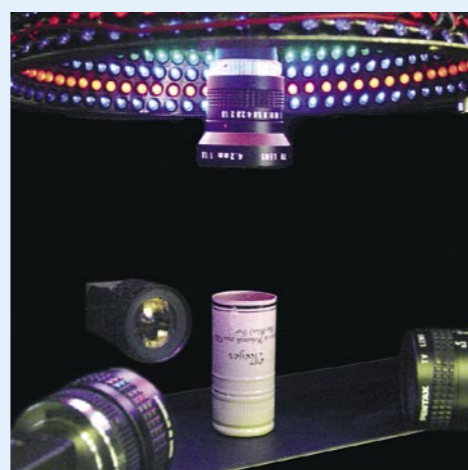
VIS-3 inspection system, modular design, rack version



VIS-3 inspection system with command panel



Compact VIS, the low priced alternative



Multi-camera-system, up to 5 cameras possible, simultaneous all-around decor and inside inspection



TIS image processing with heat flow thermography



VPMS-1 cycled system for 6 lines for 99mm foil ends production



VPMS-1 cycled system for 5 lines



VPMS-2 clock-based system for 8 lines for inspection with high clock speeds

Image Inspection

Visual inspection systems VIS

ibea uses only high quality camera, lens and illumination equipment—a key concept in developing sophisticated image inspection systems. The illumination elements are geared exactly towards the product needs by using durable LEDs for the inspection of highly reflective products. ibea components comply with the highest industry standards and assure system stability in harsh production environ-

ments for a long-lasting, maintenance-free, around the clock performance. Through remote diagnostics we are capable of checking functions and settings at lightning speed. Our systems are modular in design and can be included into existing production lines within a short amount of time. Accessories, such as camera lift or zoom lens (auto-save) further enhance your flexibility if changeover in height and diameter is required.

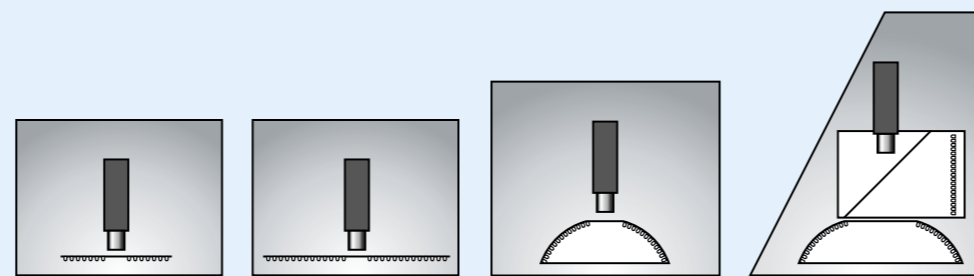
ibea's VIS disposes of a great many software standards. The user software allows for working on different "jobs" simultaneously in order to concentrate on various product colours or designs, and ultimately to allow for the possibility of a quick product changeover. Job modifications are possible anytime, even while the system is in inspection mode. During inspection the operator has a choice of selecting the

following menus: statistics, course of inspection including images of faulty objects, pareto analysis, system status and the last 200 images that show faulty objects. Up to 3 ejector signals are managed via internal RTS (Real Time System).

Our systems are designed for high production speeds (3 m/sec) and part rates of up to 3,300 ppm!

Highly specialized systems with thermography TIS

A further possibility for image inspection is the use of thermo-cameras in conjunction with heat induction. This method—also known as heat induction thermography (TIS)—is implemented e.g. for quality assessment of easy-peel ends' sealed seams. It visualizes in detail missing parts or flaws of the adhesion, at 300 ppm and contactless. This method is a less expensive and a very reliable alternative to the more intricate x-ray systems.



Individually configured imager (illumination modul / camera / lens) for various objects to be inspected

Total Quality Management:

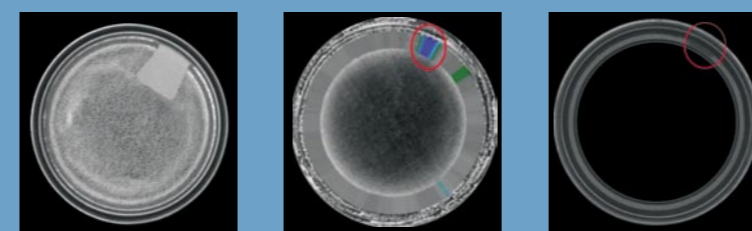
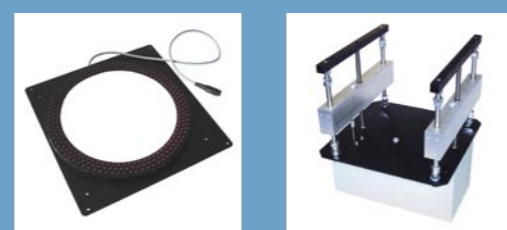
- Highest quality standards
- High volume of test criteria
- Best detection software
- Detailed statistics



Detection of faulty objects via image processing for various end and can types



Multiple accessories, such as illumination modules, automatic zoom-lenses and lifts



Non-destructive thermographic detection of faulty Easy-Peel-adhesions



Products:

- TO caps
- 2/3 piece cans (round/rectangular)
- Can bases and ends (also Aerosol)
- Easy-Peel closures
- Crown corks
- Aluminum screw caps
- PET caps
- Fishcans and closures
- as well as all similar products

Inspection criteria:

- leak tightness, faulty rubber coating
- beading and lug errors
- surface aberrations (coating variations, eyeholes, scratches, dents, inclusions)
- shape, dimensional accuracy
- decor (design, colour, scratches)
- sealing
- other aberrations